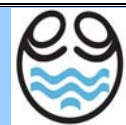


RWSSP: Technical Advisory Note 1.1

Rural Water Supply and Sanitation Programme

Background Information



1. Programme Background

The Rural Water Supply and Sanitation Programme (RWSSP) funded by the Government of Papua New Guinea and the European Union commenced in February 2006. Phase II of the Programme started in March 2009 and will last until December 2011.

The Phase II budget includes a provision of Euro 12 million for the implementation of RWSS projects over two years.

The Overall Objective to which RWSSP will contribute is;

‘Improved health of rural communities through provision of increased access to safe water supply and sanitation facilities.’

This contribution will be realised through achieving the Programme Purpose which is;

‘Sustainable community RWSS schemes implemented in selected rural areas.’

Implementation activities will be focused on achieving five main Results;

1. Sustainable RWSS schemes implemented by NSAs
2. Capacity building of NSAs and rural communities is strengthened
3. Establishment and Management of an impact monitoring unit
4. A network is established to link water supply implementing agencies and beneficiaries
5. Programme Management System established and operating,

2. Programme Management and Implementation

The RWSSP has been designed to provide communities with access to rural water and improved sanitation by channelling grants through NSA (NGO or Church organisations) with existing experience and capacity for implementing integrated, community demand driven, small-scale RWSS projects. NSA will be contracted for the implementation of RWSS projects based on the approval of proposals

submitted to RWSSP after a “Call for Proposals”.

A key area of concern for RWSSP will be the sustainability of the RWSS schemes constructed. This is expected to be addressed through an appropriate community participation strategy and procedures, including arrangements through which requests for RWSS schemes will be driven by community demand. This strategy is considered essential in order to avoid the mistakes of previous RWSS projects in PNG which failed to create sufficient sense of community ownership of RWSS schemes due to a top-down implementation approach of donors, government and implementing agencies.

To promote community ownership and sustainability of RWSS schemes community contributions to a project, in cash and in kind, will be required. This will represent 10% of the costs materials.

For NSAs to be considered they will need to have existing general management capacity as well as capacity either for the complete implementation of integrated RWSS projects or else capacity in one or more of component areas (community development, capacity building, RWSS technical design/construction, training and awareness raising on cross cutting issues of HIV/AIDS and gender) gained from the other types of projects.

An NSA capacity building programme will be developed by RWSSP to enable an increasing number of NSAs to access programme funds over the programme period and to broaden the geographical coverage of the programme.

3. “Calls for Proposals”

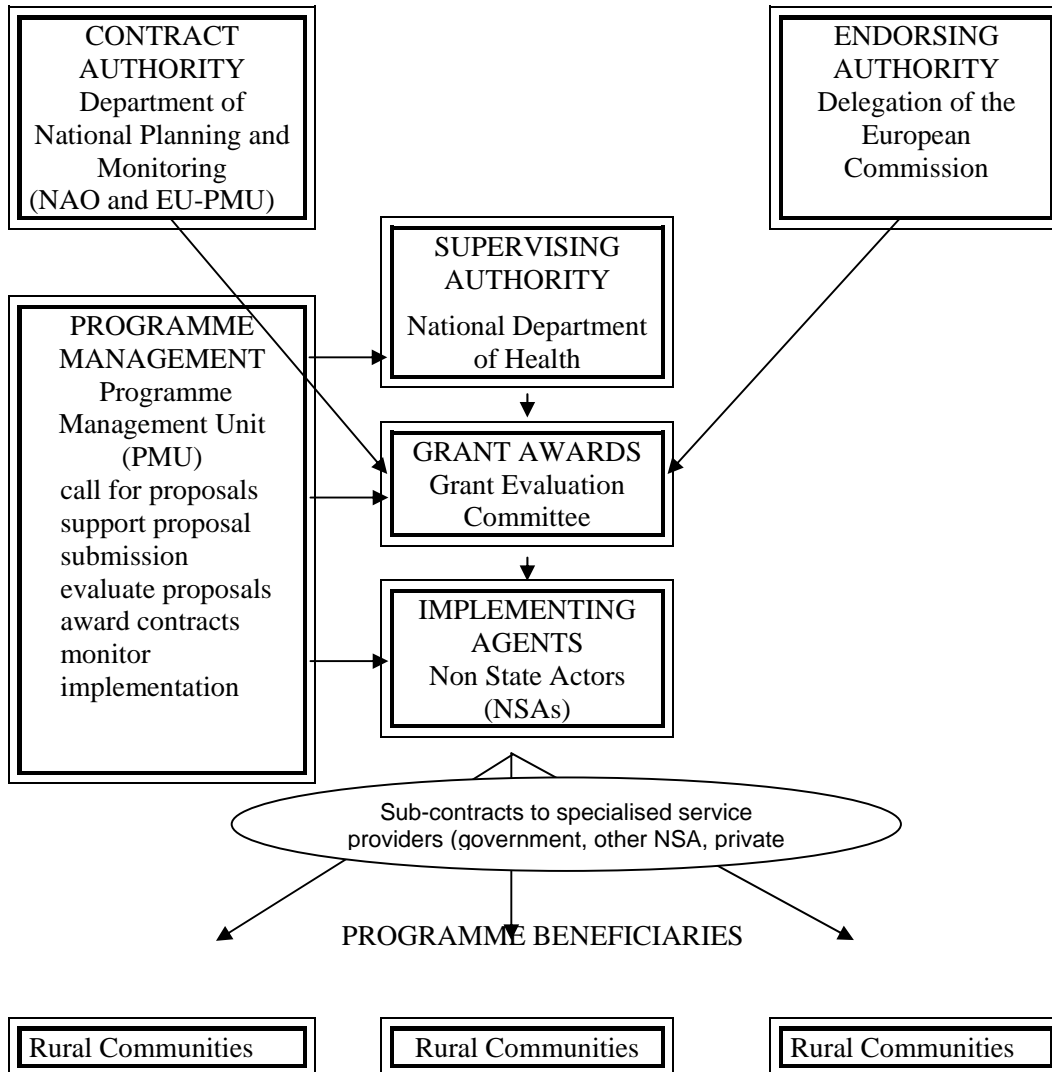
Periodically through out the implementation period “Calls for Proposals” will be made by the Programme. Interested NSAs should submit proposals following the guidelines available and using the proposal format. If these are not followed then the proposal will not be accepted..

RWSSP: Technical Advisory Note 1.1 Rural Water Supply and Sanitation Programme Background Information

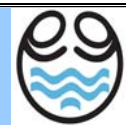


The overall RWSSP organisational structure is illustrated below in Figure 1

Figure 1: Programme Organisation Chart



RWSSP: Technical Advisory Note 1.1 Rural Water Supply and Sanitation Programme Background Information



4. Eligibility

Organisations must be in one of the following categories to be eligible to submit a proposal:

- Church or faith based organisations.
- National non-governmental organisations (NGO).
- International NGO with local affiliations or from EC/ACP country.
- Community-based organisations

To be eligible to submit proposals NSA must be 'not-for-profit' organisations, have a clear legal identity and have been in existence for more than two years. This should be supported by documentation i.e. registration with the IPA.

Registration for grant funding is not possible for the following:

- Individuals.
- Families, clans or villages.
- Private 'for profit' organisations.
- Political parties
- Government agencies.
- NSA in existence for less than two years.

5. Capacity Building

It is foreseen that not all NSAs who submit a proposal to the programme will have all of the necessary capacities to implement projects according to the criteria required under the programme. However, it is intended that a programme of training and capacity building for selected NSA will be developed by the RWSSP. Through this programme these NSA will either eventually become able to meet the requirements to either submit proposals for grant funding for RWSS projects or become implementing partners of other NSA on such proposals in the second phase of RWSSP.

The capacity assessment of NSAs undertaken during the proposal submission of NSA will be used to inform the RWSSP training and capacity building programme that will be developed to support NSA implementing partners.

The capacity areas that will be used for assessing NSA will be:

Capacity Area 1. Organisational identity, status & governance:

Registration/incorporation, history, mission, governance, networks, partnerships, etc.

Capacity Area 2. General administrative & managerial capacity:

Ability to administer and manage activities so that funds can be fully accounted for and the progress of activities monitored, assessed and report on;

Capacity Area 3. Project implementation capacity:

The general and specific capacities of the NSA to implement projects relevant to RWSSP will include consideration of the agencies technical capacity to design and construct rural water supply & sanitation schemes (or its ability to be able to acquire/access these skills) as well as capacity to plan, implement, monitor and evaluate community development actions using a participatory approach to ensure sustainability.

The specific criteria are detailed more fully in the Proposal Guidelines and Proposal Form which will be provided to NSA responding to a "Call for Proposals" with RWSSP.

7. Additional Information

NSAs wishing to find out more about RWSSP should contact the Programme Management Unit (PMU) through:

The Programme Manager,

RWSSP PMU, PO Box 85, Waigani, NCD, Port Moresby.



This programme is funded by the European Union